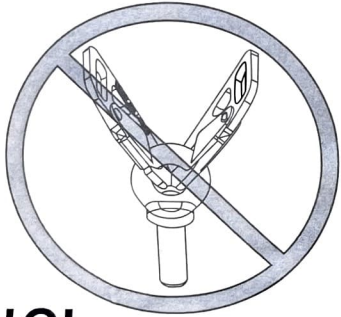
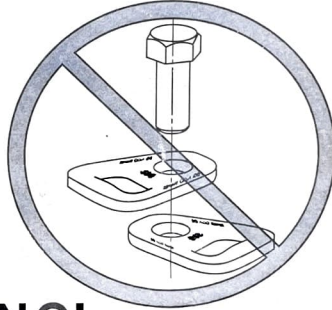


# WARNING!

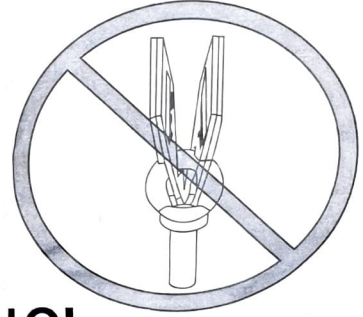
**NEVER** attach, anchor, or secure more than one mounting end of a seatbelt with a single mounting bolt or eyebolt.



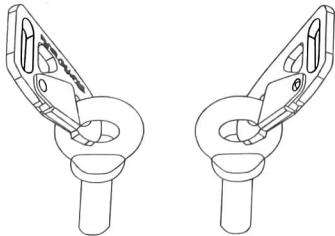
**NO!**



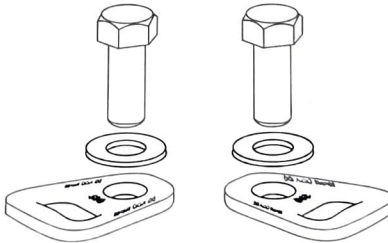
**NO!**



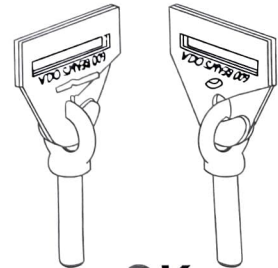
**NO!**



**OK**



**OK**



**OK**

# ⚠ CAUTION ⚠

- Always use factory seat belt mounting locations and hardware, if possible.
  1. When you use the manufacturer's threaded mounting locations, it is important that all threads be engaged fully to obtain the maximum strength of the anchorage
  2. If no original hardware is available, use 7/16-20 UNF-2A bolts with a minimum rating of grade 5.
- Seat belts should not be attached to the seat, unless the vehicle manufacturer indicates that the seats and seat mounting systems have been specifically designed to withstand seat belt assembly loads.
- If mounting to a suspension seat, a suspension seat must have seat to floor tethers. Always adjust the tethers according to the seat or vehicle manufacturer's recommendations.
- Never attach both ends of the same lap belt to the same anchorage.
- Avoid rough or sharp edges when choosing a belt path.
- CAUTION: IF THE FIXED END OF A SINGLE SIDE ADJUSTABLE BELT IS TOO LONG TO ALLOW A SNUG FIT ON A SMALL OCCUPANT, DO NOT USE THE BELT! YOU NEED A SEAT BELT WITH A SHORTER FIXED LENGTH SIDE.
- Mount the buckle side of the belt on the interior or aisle side.
- Use a flat washer between the seat belt anchor and bolt head (See Figure 3).

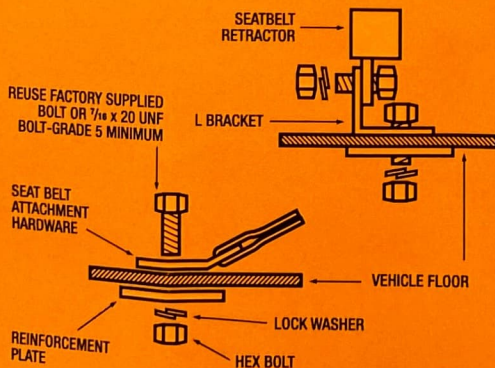


FIGURE 3 - REINFORCEMENT PLATE INSTALLATION

If you have any questions or concerns when installing your new seat belts, please give us a call at (405) 736-0088

## General Installation Information:

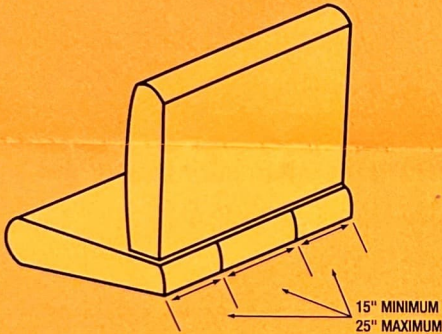
All US passenger cars, beginning with 1962 models, have seat belt anchorages for at least two lap belts in the front seat. Since January 1, 1968, vehicle manufacturers have been required to install lap belt anchorages for each front and rear seating position and upper torso belt anchorages at each forward facing outboard seating position. On January 1, 1972, the same requirement became effective for trucks.

## WHERE NO FACTORY INSTALLATION POINTS ARE AVAILABLE:

1. If the seat is adjustable, move to the rearmost position.
2. Mark the floor behind the seat to assure that the lap belt is pulling downward and rearward at approximately a 70 degree angle.

CONTINUED ON REVERSE

3. Space the attachment points 15" to 25" apart so that the lap belt forms a "U" shaped loop when in use. Never attach both ends of the same lap belt to the same anchorage or attachment point (See Figure 1).

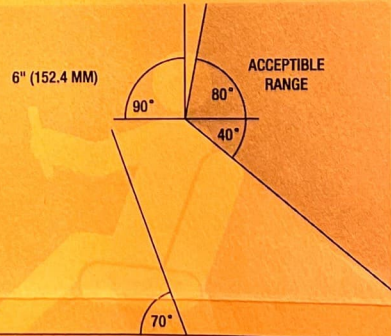


**FIGURE 1 - MAXIMUM AND MINIMUM PACING DISTANCE FOR SEAT BELT MOUNTING**

4. Carefully drill holes to avoid damaging the exhaust system and brake or fuel lines. Always use the reinforcement plates (provided with the hardware) underneath the floor. Examine and reinforce any weakened or rusted area of the floor pan.
5. If sister hooks are used to attach the belt to the vehicle, line up the holes in the hook bodies and secure the two pieces together with the cotter pins provided.

## **IF THE SEAT BELT INCLUDES A SHOULDER HARNESS:**

1. Locate a suitable point in the roof, wall, or door post that is above and behind the shoulder point of the seated occupant.
2. Drill the required holes and install the attachment hardware using the washers and reinforcement plates furnished.
3. The upper harness fitting may be mounted to a suitable reinforced attachment point located in the shaded region in FIGURE 2 labeled "ACCEPTABLE RANGE".
4. This installation can be difficult and is not certifiable because the manufacturer of the vehicle did not design it for a 3 point seat belt.



**FIGURE 2 - LOCATION OF ANCHORAGE FOR UPPER TORSO RESTRAINT**