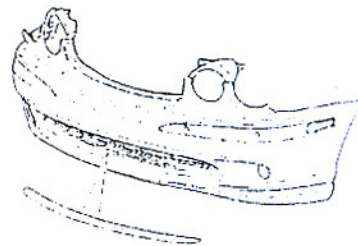


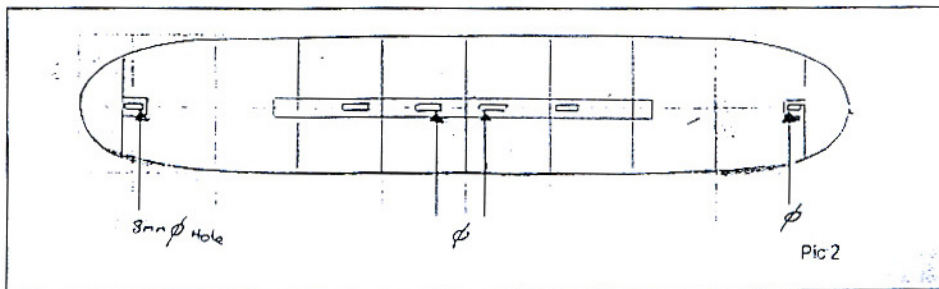
FITTING INSTRUCTIONS FOR X-TYPE POWER MESH GRILLE

- REMOVE FRONT SPLITTER (SEE PIC 1)
- DRILL AN 8MMØ HOLE THROUGH SLOTS WHERE INDICATED (SEE PIC 2)
- INSERT PINS INTO HOLES AND SLIDE ACROSS



Pic 1

- FIT GRILLE INTO APPERTURE AND FASTEN SCREWS PROVIDED THROUGH WASHERS INTO PEGS



Pic 2